



Classic Prague & Danube Delights September 17-27, 2024



Ship Emerald Destiny

Emerald Destiny is one of five of our Emerald Cruises Star-Ships specially designed to traverse the Rhine, Main, Danube and Moselle rivers in style. With tasteful and modern décor visible throughout the ship, including in the form of our three-tiered atrium that allows natural light to pour in and illuminate the interior.

At the back of the Horizon Deck, you can find our daytime pool and evening cinema. This is a feature on all of the Star-Ships that sail along the Rhine, Main, Danube and Moselle. With a retractable roof, floor-to-ceiling windows and picture-perfect views; this is the ideal spot for a gentle swim. On selected evenings, the pool seamlessly transforms into a cinema, where you can watch several blockbusters and classic films.

Our Reflections Restaurant on the Vista Deck is the center point of our dining experience on board, where sizeable windows offer excellent views of the surrounding landscapes, and you can enjoy regional and seasonal flavor's. For a more intimate experience, you can head to the contemporary Horizon Bar & Lounge, where authentic entertainment will be available on selected evenings. Boasting more than ninety suites and staterooms, the Emerald Destiny has a lot to offer when it comes to comfort, with features that would be aligned with those of a world-class hotel. You can spend your time on this vessel relaxing as picturesque views pass by, watching them from your private balcony as we sail past.

TECHNICAL DATA Length 135 meters *Guests 180 *Cabins 91 *Crew 51

ITINERARY

Tour Name: Classic Prague & Danube Delights

Tour Code: EWPB

Days: 11

Day 1 **Prague**

Tue, 17 Sep

When you arrive in Prague, you will be met at the airport and transferred to your centrally located hotel for a three-night stay.

Day 2 **Prague (B)**

Wed, 18 Sep

Today, join a walking tour of Prague to explore its vivid history through its Gothic, Renaissance and Baroque architecture, with each style encapsulating a slice of the city's past. After passing through three castle courtyards, you will visit St. Vitus Cathedral, then we walk down the Castle steps with a wonderful view over the city of Prague and we continue to Charles Bridge which we cross to reach the Old Town of Prague. We finish the city sightseeing tour in front of the famous Astronomical Clock at Old Town Square.

Included Excursion

A guided tour of Prague

EmeraldPLUS

Coffee and cake at Lobkowitz Palace

Day 3 **Prague (B)**

Thu, 19 Sep

Today is yours to spend exploring Prague at leisure, perhaps uncovering the secrets of Josefov, the Jewish Quarter and Malá Strana, one of the most historic regions in the city. Your tour director will be available to help you plan your day and to answer any questions that you may have.

DiscoverMORE

Tastes of Czechia (extra expense)

Day 4 **Prague – Regensburg (B,D)**

Fri, 20 Sep

After breakfast, it is time to leave Prague's idyllic centre and transfer to your Star-Ship in Regensburg. You'll be met at the airport by an Emerald Cruises representative and transferred to your contemporary Emerald Cruises Star-Ship, where your friendly captain and crew will be waiting to greet you.

Day 5 **Regensburg (B,L,D)**

Sat, 21 Sep

Explore the medieval centre of Regensburg with a local guide, walking the cobblestone streets, passing the patrician houses of the UNESCO World Heritage-listed Old Town, and stopping to sample traditional Bavarian sausage. Alternatively, join a bike tour to the Walhalla monument, which towers high above the slopes of the Danube. From here, you can enjoy a fascinating view of the river and the surrounding landscape.

This evening, enjoy a welcome reception with dinner, followed by a traditional Bavarian band performance on board.

EmeraldPLUS

Traditional Bavarian band on board

EmeraldACTIVE

Guided bike tour to the Walhalla monument

EmeraldPLUS

Walking tour of Regensburg with Bavarian sausage tasting

DiscoverMORE

Excursion to Nuremberg (extra expense)

Day 6 **Passau - Engelhartszell (B,L,D)**

Sun, 22 Sep

Today, we'll cruise into the heart of Passau, where three of Europe's main rivers converge in the shadows of the castle. Your guided tour of this illustrious city will unveil how it was rebuilt following fires in the 17th century. Italian architects left their mark with an array of Baroque architecture that still stands today, including St. Stephen's Cathedral. Alternatively, if you're feeling active, you can join a bike tour along the River Inn, one of the three rivers converging in Passau.

Enjoy exploring the city before returning to your Star-Ship for lunch and an afternoon of sailing along the Danube River.

EmeraldACTIVE

Guided bike tour along the River Inn

Included Excursion

Guided tour of Passau

DiscoverMORE

Excursion to the Bavarian Forest (extra expense)

Day 7
Mon, 23 Sep

Dürnstein - Krems (B,L,D)

Today, we will sail through the fascinating UNESCO World Heritage-listed Wachau Valley in Dürnstein, you can choose to hike the ruins of Dürnstein Castle, offering delightful panoramic views of the surrounding medieval villages. If you are feeling more active, you can embark on a guided bike tour in Dürnstein, passing terraced vineyards, castles and ruins along the way, before meeting your Star-Ship where it is docked. This afternoon, enjoy a guided tour of Göttweig Abbey, a true treasure overlooking the Wachau from a hill covered by vineyards and forests. As part of the UNESCO World Heritage-listed landscape since 2001, it is one of Austria's most important Benedictine abbeys and attracts visitors from all over the world. Built in 1083, it continues to serve as a spiritual centre in the heart of Lower Austria and is run by a community of about 45 monks. Visible even from great distance, the abbey provides epic panorama views when you visit.

EmeraldACTIVE

Guided bike tour along the Danube River

EmeraldACTIVE

Guided hike to Dürnstein Castle

Included Excursion

Guided tour of Göttweig Abbey

Day 8
Tue, 24 Sep

Vienna (B,L,D)

Sweeping boulevards and world-famous art exhibitions welcome you to Vienna, a city which perfectly encapsulates the opulence of the Habsburg Monarchy and their ornate Baroque palaces. For art-lovers, there's no other place like the Austrian capital, not just because the city is packed with museums and artwork but also because of its variety. Your tour will include a visit to the Kunsthistorisches Museum, the largest art museum in the country and one of the most important museums worldwide.

Alternatively, embark on a guided cycling tour from where your Star-Ship is docked to the idyllic Danube Island.

EmeraldACTIVE

Guided bike tour in Vienna

Included Excursion

Vienna art tour with a visit to the Kunsthistorisches Museum

DiscoverMORE

Viennese evening concert (extra expense)

Day 9
Wed, 25 Sep

Bratislava (B,L,D)

A delightful scattering of Baroque palaces and Gothic architecture that tell tales of a communist past are yours to uncover as we sail towards Bratislava. Enjoy a guided tour of the city's enchanting history, taking in the neo-Renaissance glory of the Slovak National Theatre and the Episcopal Summer Palace.

Alternatively, embark on a guided hike to Bratislava Castle and its idyllic Baroque gardens, offering the perfect backdrop to the Shakespeare festival that takes place during the summer months.

This afternoon, enjoy coffee and cake in the home of a Slovakian family before being welcomed to your farewell dinner.

EmeraldPLUS

Home-hosted coffee and cake with a Slovakian family

EmeraldACTIVE

Guided hike to Bratislava Castle

Included Excursion

Walking tour of Bratislava

DiscoverMORE

Skoda tour of post-Communist Bratislava (extra expense)

DiscoverMORE

Carpathian wine route (extra expense)

Day 10
Thu, 26 Sep

Budapest (B)

Welcome to Budapest, a city generously steeped in history and culture, where ancient architecture exists alongside contemporary buildings. Enjoy a guided city tour, covering some of the highlights of Budapest and learn more about its stunning landscape and architecture. The history of the Hungarian capital shows a unique blend of cultures, cuisine and vibrant lifestyle. There is so much to take in while you pass through the bustling city, which is an attractive destination for visitors from all over the world. Alternatively, enjoy a hike to Gellert Hill and gaze over the Danube.

EmeraldPLUS

Traditional Hungarian folklore show on board

EmeraldACTIVE

Hike to Gellert Hill

Included Excursion

Guided coach tour of Budapest

DiscoverMORE

Jewish Heritage tour (extra expense)

DiscoverMORE

Excursion to Szentendre (extra expense)

Day 11
Fri, 27 Sep

Budapest (B)

After breakfast, it's time to say farewell to your fellow guests and disembark your Star-Ship for your transfer to the airport, taking wonderful memories of the Viennese skyline and architectural masterpieces with you. This itinerary is a guide only and may be amended for operational reasons such as high and low water. As such, the cruise may operate altered from that stated above. Please refer to our terms and conditions for further information.

PRICING & ADDITIONAL GROUP PROMOTIONS

CAT	Stateroom/Suite	Deck	Group Fare
E	Emerald Stateroom	Riviera	\$3320
ES	Emerald Single Stateroom	Riviera	\$4170
D	Emerald Stateroom	Riviera	\$3620
C	Emerald Panorama Balcony Suite	Vista	\$4270
B	Emerald Panorama Balcony Suite	Vista	\$4470
A	Emerald Panorama Balcony Suite	Horizon	\$4620
S	Grand Balcony Suite	Horizon	\$5670
SA	Owner's One-Bedroom Suite	Horizon	\$6770

Pricing is per person. Included in the above group fares is a per person port charge of \$374

The offers stated in this package are exclusive to Sharpe Travel Group.

The cruise tour pricing includes these special offers:

- *Free Prague 3-Night Pre-Cruise Extension for bookings made by December 31, 2023 (a value of \$620 per person, double occupancy).
- *Premium Drinks Package
(Unlimited spirits, beer, wine and soft drinks throughout the cruise)
- *25 Euro's per person Onboard Credit
- *\$75 per person Sharpe Travel Group discount per person noted in pricing above
- *\$350 per person Special Group Savings noted in the pricing above thru December 06, 2023

FLY FREE OFFER

Deposit \$500.00 per person at the time of booking, pay in full within 30 days of deposit.

Free premium economy air available on S, SA categories with a max value \$2500pp or \$1500pp savings in lieu of free premium airfare.

Free economy air is available on other cabin categories with a max value \$1500pp, or \$1000pp savings in lieu of free economy airfare.

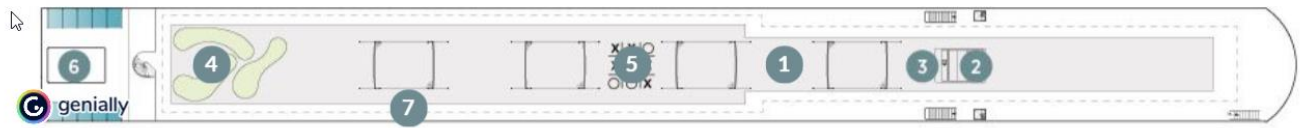
The Emerald**EXPERIENCE**

- **Airport transfers** to and from your Star-Ship
- Stylish **Accommodations** on board our Star-Ship
- All **Meals** included while on board, including a Welcome and Farewell Reception & Dinner
- Complimentary wine, beer and soft drinks to accompany lunch & dinner on board
- Complimentary tea & coffee on board
- Complimentary bottled water in your suite or stateroom, restocked daily
- A variety of onboard evening entertainment
- Complimentary Wi-Fi on board
- An excursion almost every day
- Complimentary bicycles on board
- First-class service from English-speaking crew and knowledgeable local guides
- Earn Emerald**EXPLORER** loyalty points
- All port charges and overseas transfers
- All gratuities are included

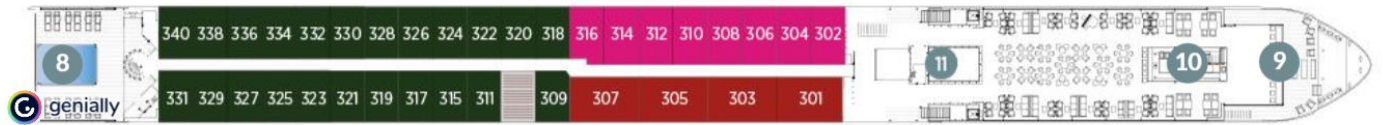
:

DECK PLAN AND STATEROOMS

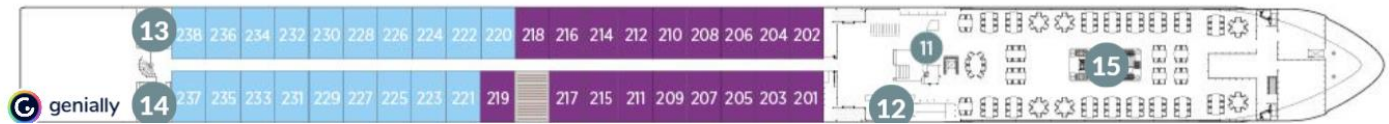
Sun Deck



Horizon Deck



Vista Deck



Riviera Deck



Deck Plan

- ① Sun deck with deck chairs
- ② Navigation bridge
- ③ Sky barbecue
- ④ Golf putting green
- ⑤ Games area
- ⑥ Retractable glass roof
- ⑦ Walking track
- ⑧ Daytime pool & bar/ evening cinema
- ⑨ The terrace
- ⑩ Horizon bar and lounge
- ⑪ Lift
- ⑫ Reception
- ⑬ Wellness area
- ⑭ Fitness area
- ⑮ Reflections restaurant

Cabin Categories

Horizon Deck

- S** Grand Balcony Suite
- SA** Owner's One-Bedroom Suite
- A** Emerald Panorama Balcony Suite

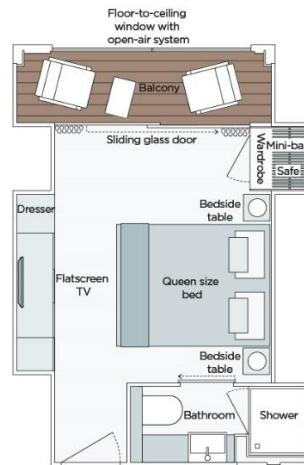
Vista Deck

- C** Emerald Panorama Balcony Suite
- B** Emerald Panorama Balcony Suite

Riviera Deck

- E** Emerald Stateroom
- D** Emerald Stateroom
- ES** Emerald Single Stateroom - Single Occupancy Only

Suites



Grand Balcony Suite

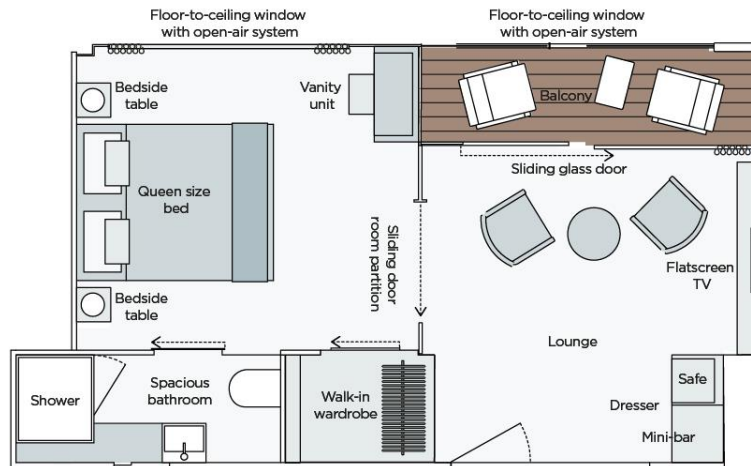
Dimensions: 210ft²

S

Staying in the Emerald Grand Balcony Suite makes waking up and going to sleep a dream. Open your balcony, with the simple press of a button, to let in the river breeze on a lazy morning, as the unrivalled comfort of your queen-size or twin hotel-style bed, dressed with luxurious linens, encourages you to lie in that little bit longer.

Wake up to the luxurious surrounds of your stylish bathroom, enjoying a revitalizing shower, complete with sumptuous toiletries. Then, what could be better than having a continental breakfast brought to your door to enjoy on your own private balcony? Complimentary bathrobes and slippers make lounging comfortable, and your own in-suite Nespresso™ machine means you can sip a fresh coffee as you ponder your itinerary and what the day has to offer.

Select your preferred pillow from our extensive menu and enjoy an exceptionally comfortable night's sleep, or simply relax as you watch a film on your suite's flat screen TV and infotainment system, during some down time. Individual climate control enables your room to stay at the right temperature to suit you, whether you're sailing in the warmer summer months, or the cooler winter. And, stay in touch with family and friends using your in-suite telephone or make the most of complimentary Wi-Fi for contacting them by your preferred method.



Owners One-Bedroom Suite

Dimensions: 315ft²

SA

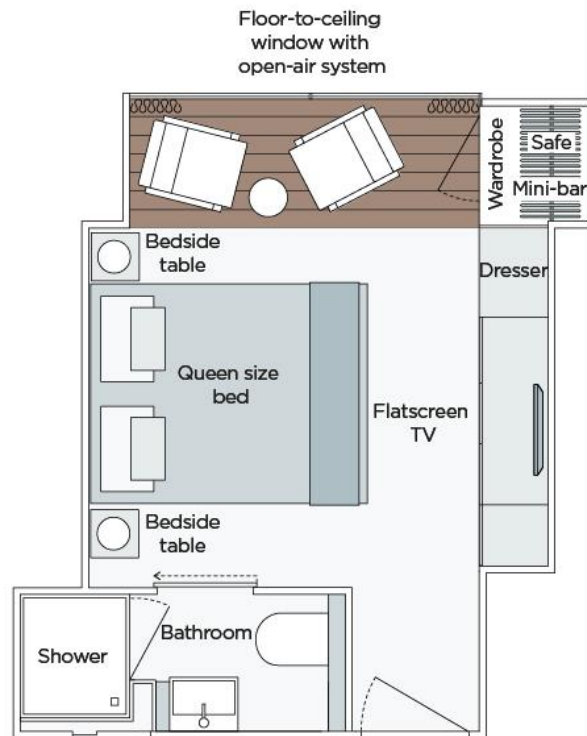
Some of the most sumptuous suites on European waterways, our Owners One-Bedroom Suite has it all. A separate lounge and bedroom area allows the luxury of space, from which to enjoy your complimentary continental breakfast in the morning, a drink from your fully stocked minibar or after-dinner sweet treats before bed.

Your queen-size or twin hotel-style bed will be draped in high quality linens, for the perfect night's sleep, plus you'll have the pleasure of selecting your preferred pillow from our extensive menu. Get comfortable for the night after a busy day exploring and prepare for the next as you unwind with a film on your flat screen TV and infotainment system in true comfort.

A walk-in wardrobe makes unpacking even more of a dream. A great space to keep all your belongings and outfits for special occasions, such as your exclusive dinner at the Captain's Table. You'll even have the option to have four items laundered a day to ensure that favorite dress or suit is in the best possible condition for your event.

In the morning, enjoy the perfect wake-up call with a fresh coffee from your in-suite Nespresso™ machine. Sip it on the balcony, wrapped in the comfort of your Emerald Cruises bathrobe and slippers after a refreshing shower in your stylish in-suite bathroom, enhanced by luxurious toiletries.

You'll have so much to tell your loved ones back home, so we've made keeping in contact really easy. Not only will you have an in-suite telephone, but complimentary Wi-Fi throughout the Star-Ship and an iPad means you can choose your favorite method of communication, whenever the moment suits.



Emerald Panorama Balcony Suite

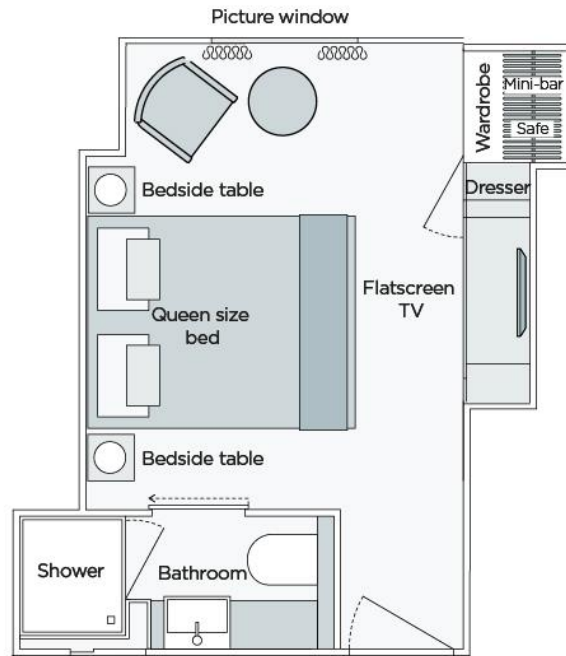
Dimensions: 180ft²



Your Emerald Panorama Balcony Suite offers everything you could possibly need throughout your cruise, and more. You'll be surrounded by elegant décor and opulent, comfortable furnishings, as you unwind in your home-away-from-home. Relax on your balcony as the stunning landscapes pass by, and transform it from an indoor to an outdoor space with ease, as the floor-to-ceiling window lowers to a halfway point at the touch of a button. Enjoy the river breeze from your comfortable chair, enjoying a good book or the unfolding vistas. Treat yourself to a drink from your suite's minibar, or use it to keep your complimentary bottle of water chilled, or for any souvenirs that require it.

When it's time to retire to bed, you can look forward to the exceptional comfort of your queen-size or twin hotel-style bed, complete with luxurious linens. Treat yourself to an indulgent shower with luxury toiletries, to really prepare yourself for an excellent night's sleep.

Of course, keeping in touch with your loved ones is really easy. Every suite has its own telephone, as well as complimentary Wi-Fi being available throughout the Star-Ship.



Emerald Stateroom

Dimensions: 162ft²

E

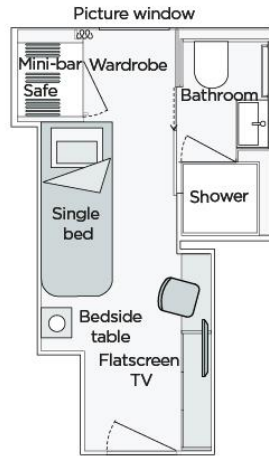
B

An Emerald Stateroom is home to all the amenities you need to settle into your home-away-from-home. A great size picture window lets in the perfect amount of light, welcoming in the golden summer sunshine, or the winter sun during cooler months.

Comfort is of the highest importance, so each room features individual climate control, allowing you to personalise your room's temperature to suit your preferences and the time of year you're cruising.

We've designed our bathrooms as a relaxing retreat to retire to after an exciting day exploring. Enjoy a sumptuous shower complete with indulgent toiletries, as well as a hairdryer, all before settling into your queen or twin hotel-style bed, complete with luscious linens, as you enjoy a movie on your flat screen TV and infotainment system with, perhaps, a nightcap from your mini-bar.

If you wish to stay in contact with loved ones throughout your trip, you can do so using your in-suite telephone or our free Wi-Fi available throughout the ship.



Emerald Single Stateroom - Single Occupancy Only

Dimensions: 117ft²

ES

Each ship offers two Emerald Single Staterooms featuring picture windows and the same high quality facilities as all other cabins. With their deluxe single bed, they provide excellent value for money for single guests.



Karen Sharpe
Owner

Toll-Free: 833-474-2773 ext.101
Cell: 586-255-9595
Web: www.sharpetravelgroup.com
Karen@sharpetravelgroup.com



Where Great Journeys Begin